

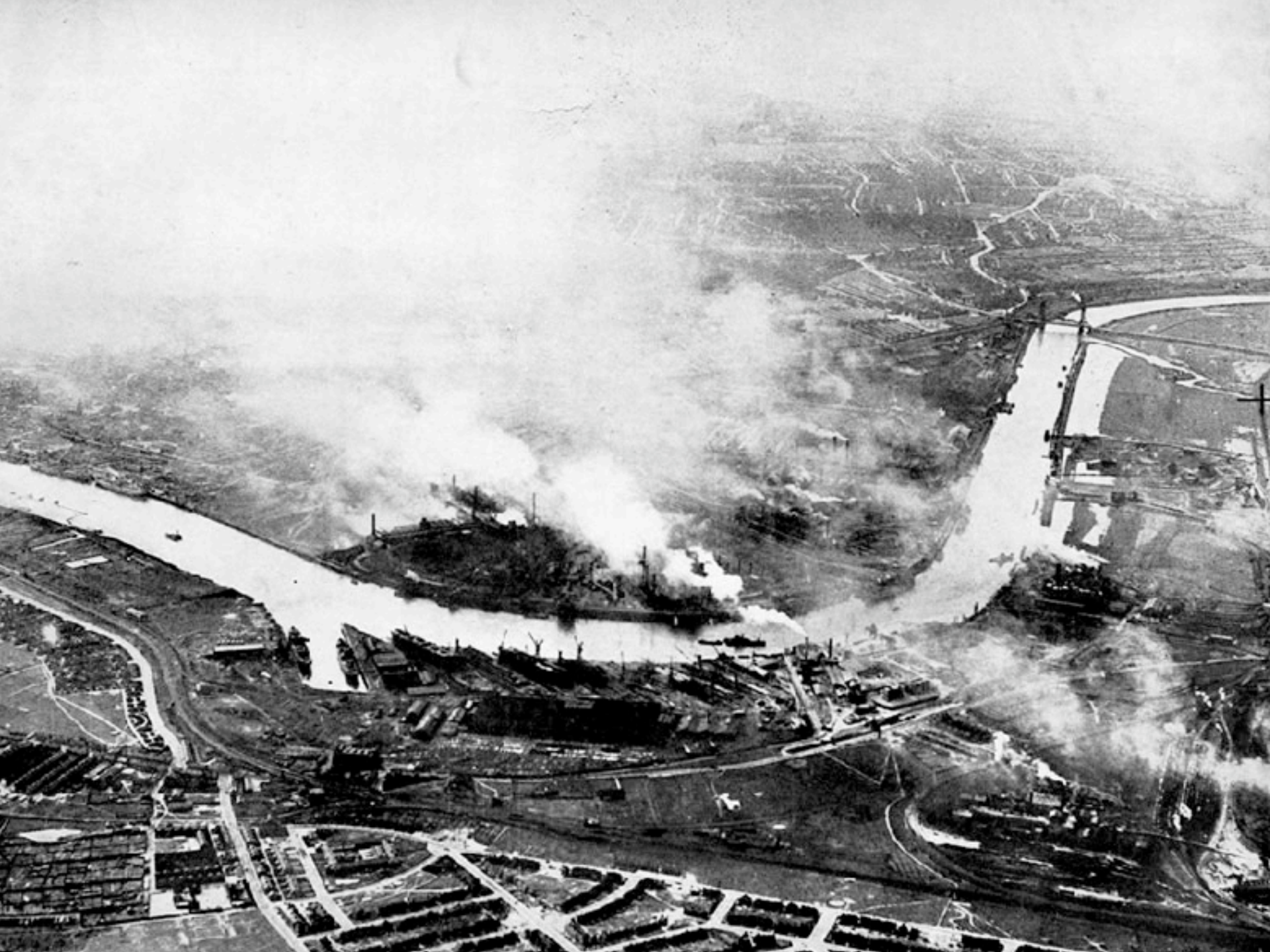


Commission for Architecture
and the Built Environment

Benchmarking the Green Blue Heart of Stockton Middlesbrough

Study Trip **Malmo, Helsingborg, Sweden**
Hannover, Leipzig and Freiburg, Germany

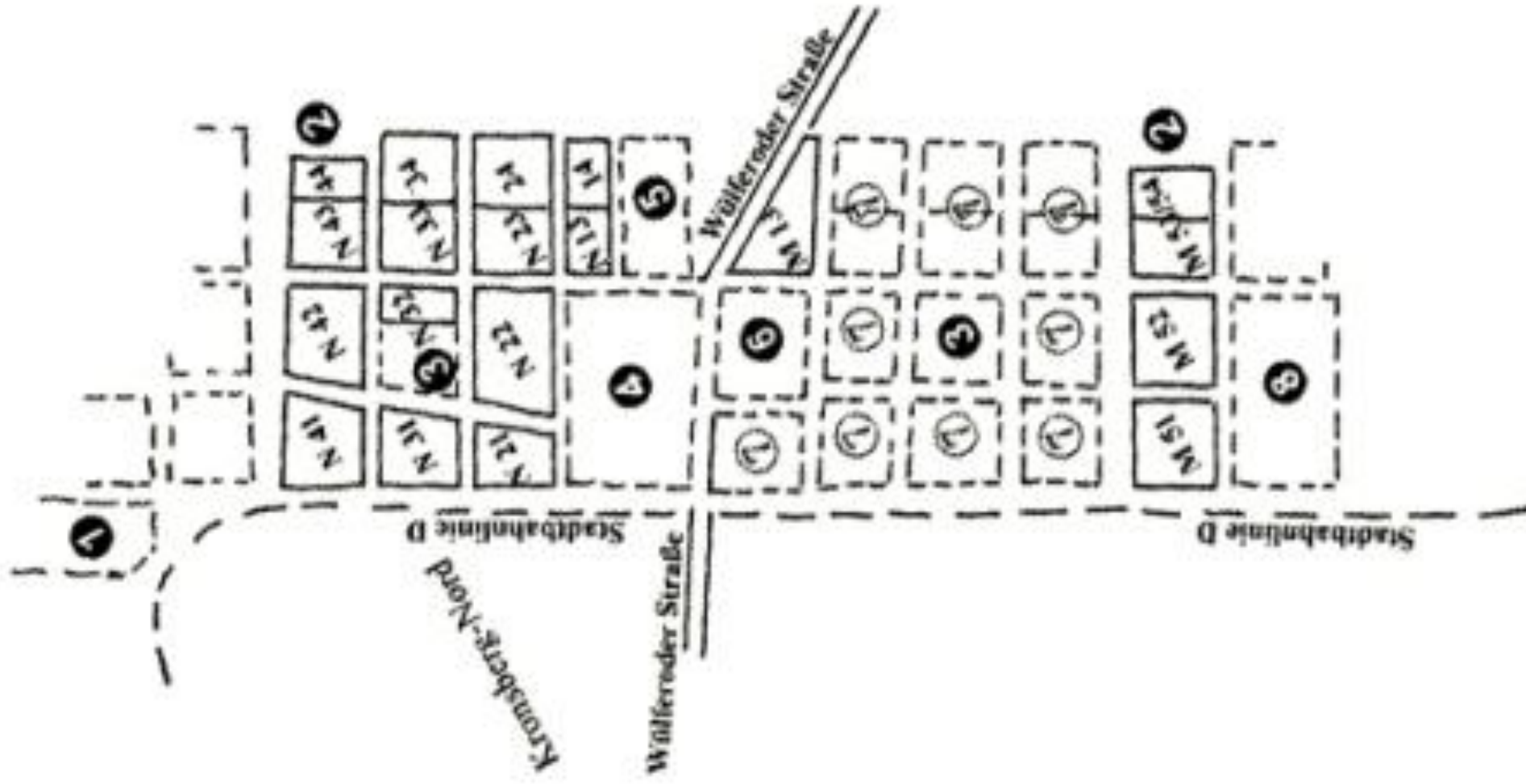






Kronsberg district masterplan, Hannover

Arnaboldi, Cavadini and Hager, [Locarno / Zurich - winners of the "Urban and landscape planning competition", November 1992] and Welp, Welp and Sawadda [Braunschweig – winners of the "Urban planning competition for the Kronsberg district", November 1993]



“Microclimate building”, Kronsberg Hannover



“KroKus” arts and community centre



“Habitat” International housing project Planungsburo Schmitz Aachen GmbH



Agenda 21 GästeHaus, Kronsberg Hannover



“Solarcity”



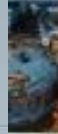
zen ...

Wie es funktioniert ...

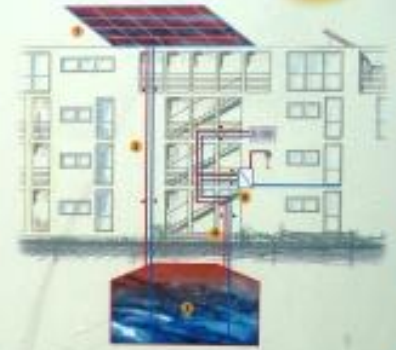


tausend

Bei 2 750 Kilowatt großer Photovoltaik-Anlage werden im Sommer vom Februar bis in den Dezember Energie zu speichern. Die Speicher sind mit Luft, die vorverwärmung dieses hochwertigen Hochleistungsbedarfs aus dem Netz kann auf die bisher notwendige Gärungsleistung reduziert werden, was zu einer erheblichen Kostenreduzierung führt. Sowohl aus optischen Gründen als auch wegen der besseren Nutzung ist der Speicher nach Süden in die Erde eingebettet. Der oberer Teil ist mit Luft angereichert und als Anlage in der Speicher, der benachbarten städtischen Kindertagesstätte integriert.



Die durch die Solarzellen gewonnenen Wärme wird durch Luftkanäle über die Solaranlage transportiert. Auf dem Speicher werden die Heizkosten mit Heizgasen und Warmwasser bezahlt.



Solarcity



“Lummerlund” Passive House Development, Kronsberg



“Große Barlinge Passiv Haus”, Hannover





'Grünes Rietzschkeband' Urban Greening Strategy, Leipzig Becker Gibeke Mohren Richard



P-D ChemiePark, Bitterfeld Wolfen Leipzig



Vauban District Masterplan, Freiburg
Kohloff & Kohloff Architects, Stuttgart



'Heliotrop, Solar-Siedlung, Solar-Schiff, Vauban
rolf disch & partner büro für solar architektur, Freiburg



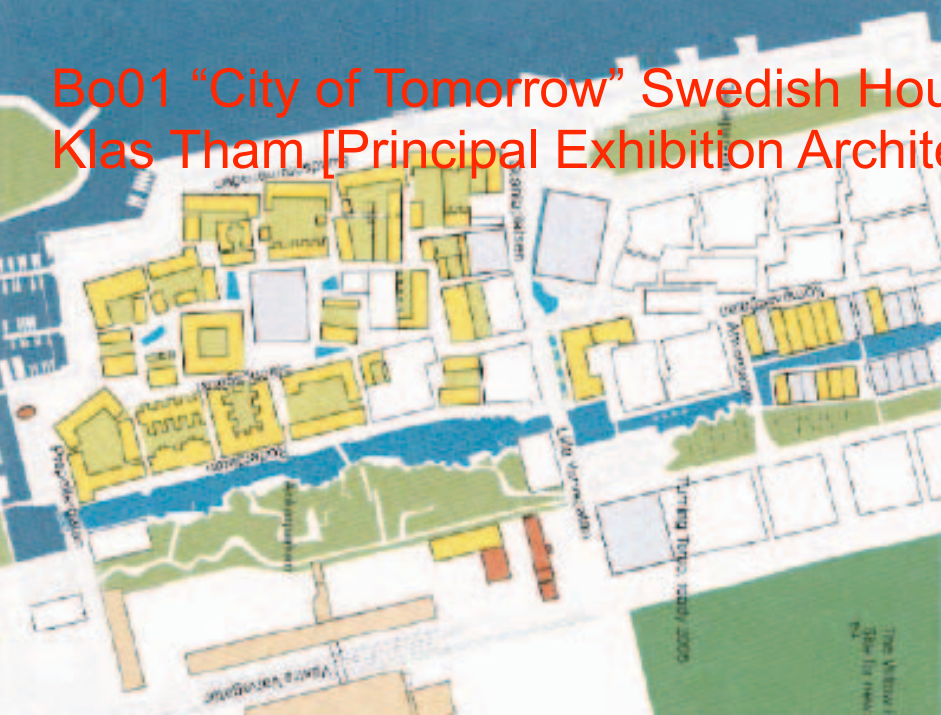
‘Die Solariedlung’ solar power energy plus development, Quartier Vauban
rolf disch & partner büro für solar architektur, Freiburg



'Passiv Haus', Quartier Vauban, Freiburg
Wohnen & Arbeiten / Michel Giehse Architektur, Freiburg



Bo01 "City of Tomorrow" Swedish Housing Expo, Western Harbour Malmö
Klas Tham [Principal Exhibition Architect of Bo01], Arken Arkitekter, Stockholm



'Townhouse' Family Housing, Western Harbour Malmö
Catherina Fored, a-plus arkitekter



“Turning Torso” Santiago Calatrava



H99 Swedish Housing Expo Norra Hamnen masterplan, Helsingborg



Konsert-huset, Helsingborg



Waterfront “atelier units”, Helsingborg



Underground car park, Helsingborg



CABE @ Tees Valley Carbon Off-Setting Calculations

Study Trip to Sweden April 2006

Nine people on return flights from Newcastle to Copenhagen results in 1818 km of air travel producing 2.7 tonnes of CO₂ with an additional person on a return flight from London Stansted to Copenhagen results in 1828 km of air travel producing 0.3 Tonnes of CO₂. This can be mitigated by contributions to one of the following - Natural woodland portfolio cost - £27.20 / International communities portfolio cost - £31.80 / Futures portfolio cost - £33.00.

Study Trip to Germany, May 2006

Nine people flying from Newcastle to Hannover [one-way direct] results in 801 km of air travel producing 0.9 tonnes of CO₂. On return, one person returning from Hannover to Newcastle results in 801 km of air travel producing 0.1 tonnes of CO₂, five people returning to Durham Tees Valley from Basel via London Heathrow resulting in 1069 km of air travel producing 1.0 tonnes of CO₂ one person returning to Liverpool from Basel [direct] resulting in 972 km of air travel producing 0.1 tonnes of CO₂ and an additional two people returning from Basel to London Heathrow [direct] resulting in 718 km of air travel producing 0.2 tonnes of CO₂. This can be mitigated by contributions to one of the following - Natural woodland portfolio cost - £26.30 / International communities portfolio cost - £29.60 / Futures portfolio cost - £30.30.



The tours to Sweden and Germany included representatives from British Waterways, CABE, Middlesbrough Council, Newcastle University, One North East (the regional development agency), Stockton Council officers and members, Tees Valley Living (the local housing market renewal initiative), Tees Valley Regeneration (the urban regeneration company).



These calculations are based on figures provided by The Carbon Neutral Company using their on-line calculator at www.carbonneutral.com and are estimates of CO₂ emissions generated by air travel only. This is one of a number of companies that provide carbon off-setting calculators and is linked to the Department of Environment, Food and Rural Affairs.